

■ **FEATURES**

- UL recognition, file #E230084
Universal 3-way terminals: snap-on, wire wrap-around, or PCB mounting
- High surge current capability
- Solder dip 275 °C max. 7 s, per JESD 22-B106

■ **TYPICAL APPLICATIONS**

General purpose use in AC/DC bridge full wave rectification for power supply, home appliances, office equipment, industrial automation applications.

■ **MECHANICAL DATA**

- Package : BR- L
Molding compound meets UL 94 V-0 flammability rating, RoHS-compliant
- Terminals : Tin plated leads, solderable per J-STD-002 and JESD22-B102

■ **MAXIMUM RATINGS** (Ta=25°C Unless otherwise specified)

PARAMETER	SYMBOL	UNIT	BR15005L	BR1501L	BR1502L	BR1504L	BR1506L	BR1508L	BR1510L
Device marking code			BR15005L	BR1501L	BR1502L	BR1504L	BR1506L	BR1508L	BR1510L
Repetitive Peak Reverse Voltage	VRRM	V	50	100	200	400	600	800	1000
Average Rectified Output Current @60Hz sine wave, R-load, With heatsink Tc=55°C	IO	A	15						
Surge(Non-repetitive)Forward Current @60Hz Half- sine Wave, 1 cycle, Ta=25°C	IFSM	A	400						
Current Squared Time @1ms≤t≤8.3ms Tj=25°C, Rating of per diode	I ² t	A ² S	660						
Storage Temperature	Tstg	°C	-55 ~+150						
Junction Temperature	Tj	°C	-55 ~+125						
Dielectric Strength, Terminals to case, AC 1 minute	Vdis	KV	2.5						
Mounting Torque	TOR	kg·cm	10						

■ **ELECTRICAL CHARACTERISTICS** (Ta=25°C Unless otherwise specified)

PARAMETER	SYMBOL	UNIT	TEST CONDITIONS	BR15005L	BR1501L	BR1502L	BR1504L	BR1506L	BR1508L	BR1510L
Maximum instantaneous forward voltage drop per diode	VFM	V	IFM=7.5A	1.1						
Maximum DC reverse current at rated DC blocking voltage per diode	I _{RRM}	μA	V _{RM} =V _{RRM}	10						

■ **THERMAL CHARACTERISTICS** (Ta=25°C Unless otherwise specified)

PARAMETER	SYMBOL	UNIT	BR15005L	BR1501L	BR1502L	BR1504L	BR1506L	BR1508L	BR1510L
Thermal Resistance Between junction and case, With heatsink	R _{θ J-C}	°C/W	3.3						

■ **PACKAGING INFORMATION**

PREFERRED P/N	PACKAGE CODE	UNIT WEIGHT(g)	MINIMUM PACKAGE(pcs)	INNER BOX QUANTITY(pcs)	OUTER CARTON QUANTITY(pcs)	DELIVERY MODE
BR15005L~BR1510L	A1	Approximate 17.1	60	60	600	Paper Box

■ **CHARACTERISTICS (TYPICAL)**

FIG1:Io-Tc Curve

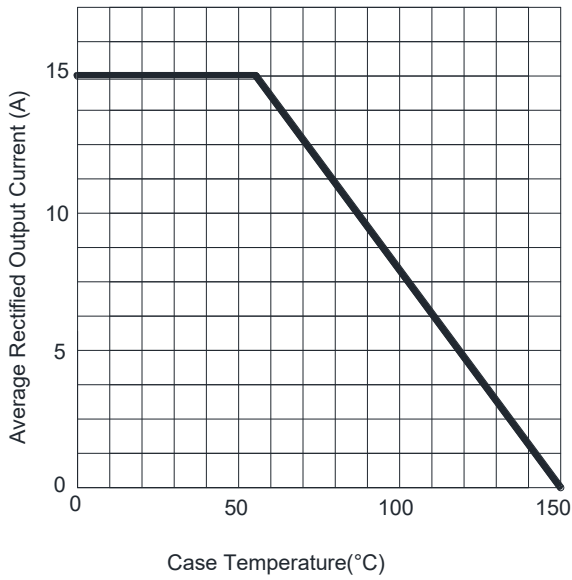


FIG2:Surge Forward Current Capability

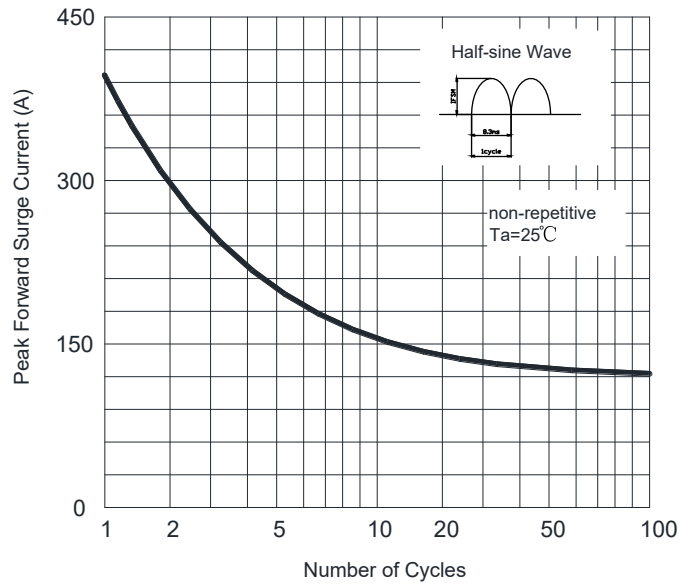


FIG3:Instantaneous Forward Voltage

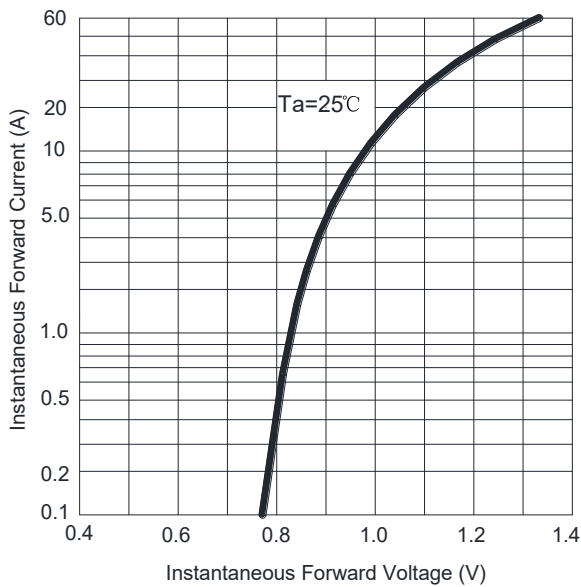
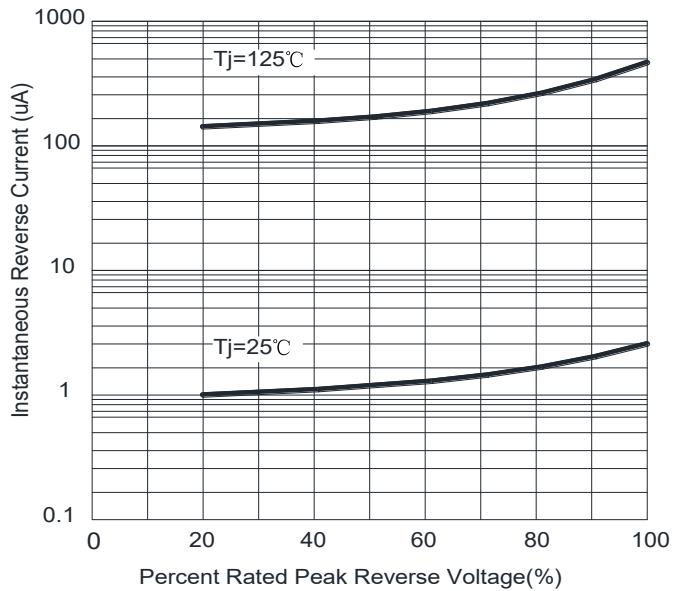
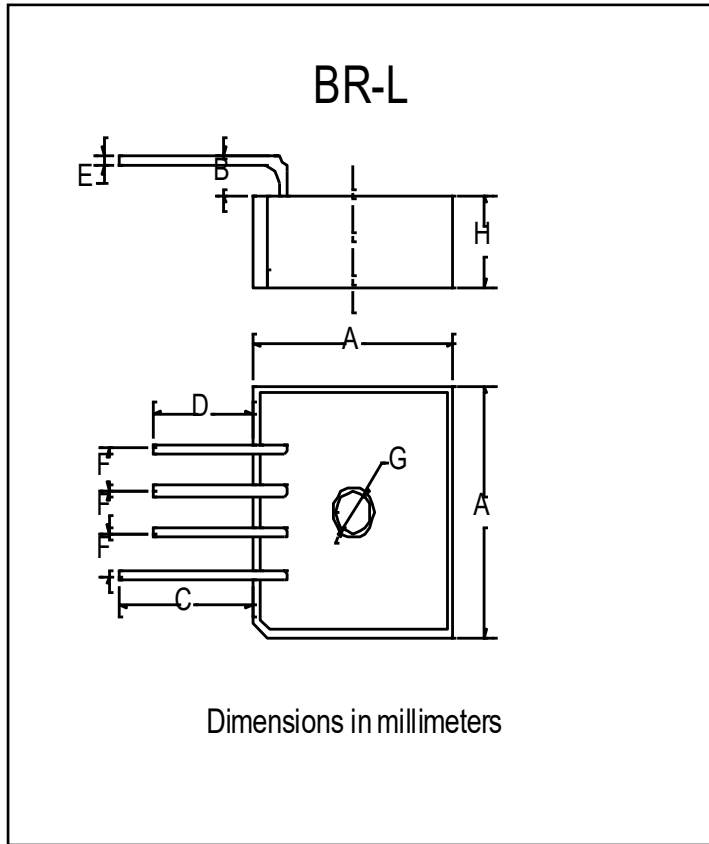


FIG4:Typical Reverse Characteristics



■ **OUTLINE DIMENSIONS**



BR-L		
Dim	Min	Max
A	28.2	28.8
B	3.0	4.5
C	19.1	
D	13.9	
E	1.23	1.33
F	4.6	5.6
G	5	5.5
H	10.8	11.2